



Industry 4.0: Data Analysis is Key for Optimizing the Shop Floor

Dr.-Ing. Benny Drescher

CTO at Hong Kong Industrial Artificial Intelligence and Robotics Centre (FLAIR)

July 8, 2021

Lean Management helps to identify eight types of waste in a manufacturing and logistic operations.



Talent

Employees not leveraged to their potential



Inventory

Holding inventory (material and information) more than is required



Motion

Movement of people or information that does not add value



Waiting

Waiting for someone, information, or an event to happen



Transportation

Movement of items (or information) more than is required resulting in wasted efforts, energy, and cost



Defects

Errors, mistakes, and Rework



Overproduction

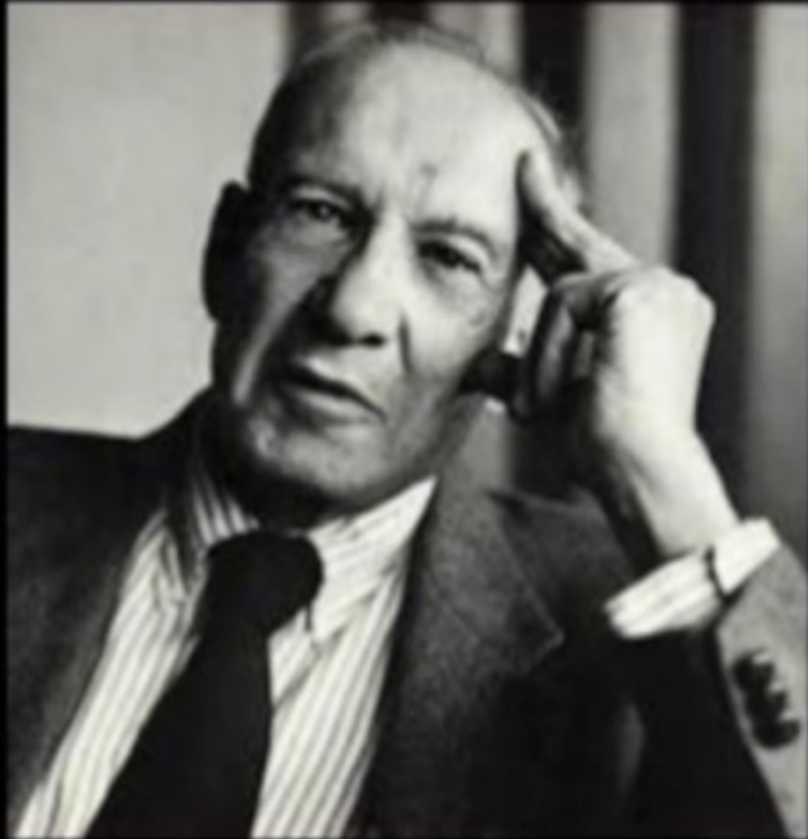
Processing more than required where a simple approach would have been sufficient



Overprocessing

Processing too soon or too much (than what is required)



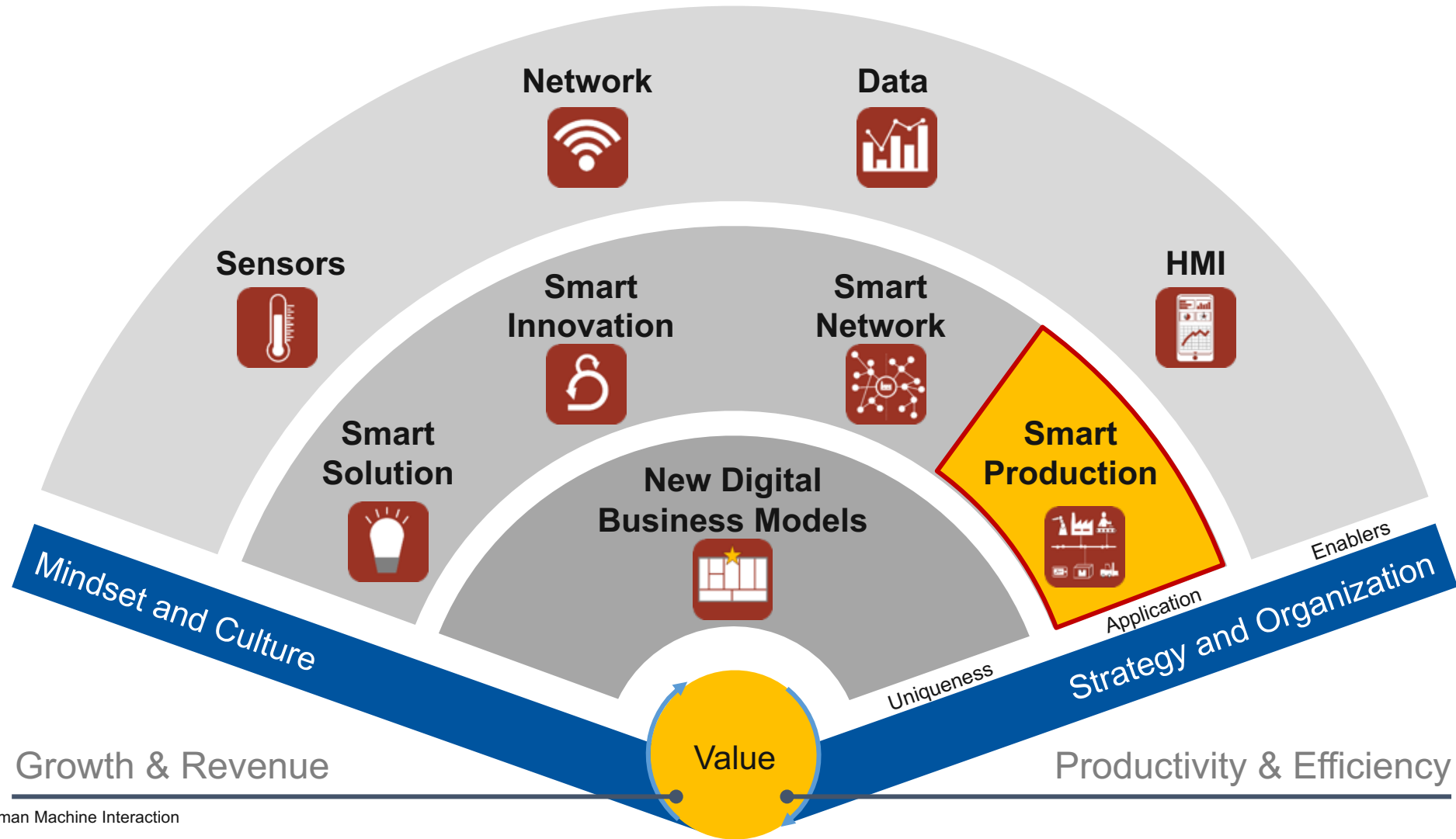


“If you can’t
measure it,
you can’t
manage it”

Peter Drucker



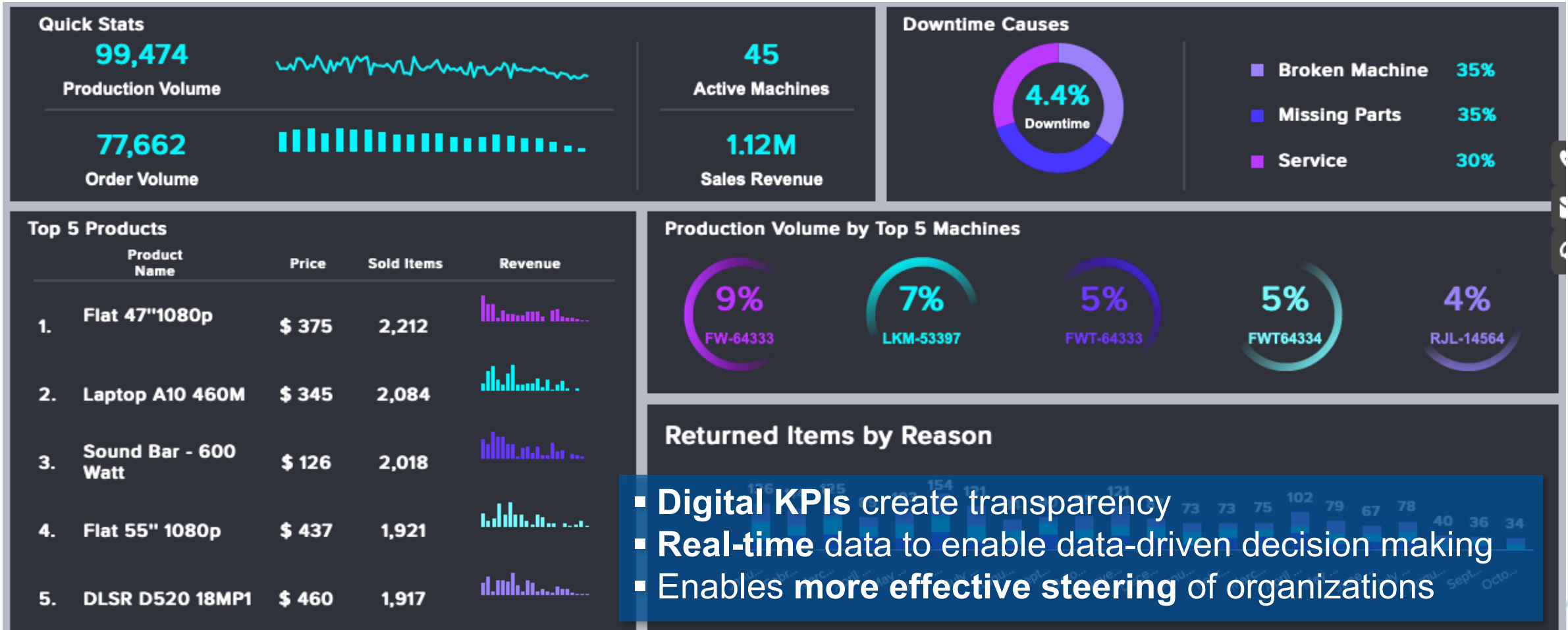
The Smart Navigator for Industry 4.0 concentrates on creating business value for manufacturing companies.



*Human Machine Interaction



Most important step is the visualization of the shop floor in real-time.



Online monitoring of printing machines enables novel services for scheduling maintenance at customers.



The Manufacturing Execution System ToolScope of KOMET monitors machine and process status of CNC Machines.



Thank you very much!

